

Renderings Courtesy of Perkins + Will

BUILDING A BETTER BELL

Chances are, if you attended elementary school in the Twin Cities area, you've taken a field trip to the Bell Museum of Natural History on the University of Minnesota Campus. Since opening its doors in 1940, kids and adults alike have flocked to the museum to discover the larger-than-life wildlife dioramas, explore fossils and bones in the "touch and see" room and, of course, visit Minnesota's favorite moose.

As charming as the museum was, the 75+-year-old building had some flaws including an out-of-date climate control system that lacked air conditioning,

poorly lit hallways and exhibits, and inadequate handicapped access. Given these factors, Bell officials sought legislative support to build a new museum in St. Paul and—after 10 years of petitioning—were granted funding.

McGough Construction was hired to build the new museum to feature a digital planetarium, high-tech exhibits and an outdoor space in addition to many of the old favorites including the popular dioramas. Soon after the groundbreaking in April 2016, Gephart Electric was hired as the electrical contractor for this prominent project.

It was clear from the start that Gephart would play an important role in nearly every area of the museum. Our team installed over 3,000 ft. of track lighting in the exhibit area of the museum, LED pathway lighting on the exterior of the building, pathways to each exhibit, LED lighting in the education wing, and LED lighting on the Green Roof. Additionally, a 1,500 ft. underground ductbank was installed using horizontal boring, connecting the communications backbone from the University of Minnesota St. Paul Campus to the museum.

Continued on Page 3

"Gephart's team was a great asset during construction to the entire project team, including the design team. Their coordination effort and insight throughout the project was outstanding, which helped to lead to the project's success."

- Adam Rustad, Project Manager, McGough Construction



Larry Heinsch

Vice President & Principal

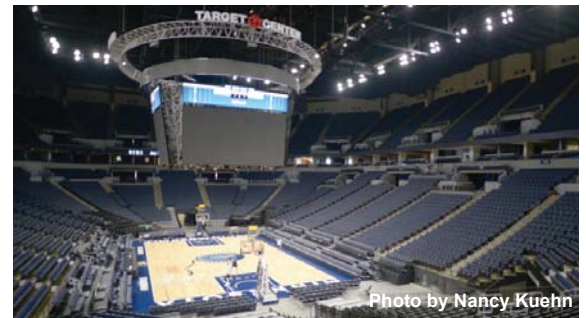
LETTER FROM LEADERSHIP

Another holiday season is upon us and it is apparent we have much to be thankful for. This year Gephart celebrated our 40th anniversary, reaching this milestone makes me think about where we came from and where we are now. A lot has changed since that day in 1977 when I came home from school to find a service van, with a name on it I could not pronounce, parked in our driveway. It was a two-person operation with my father doing the work in the field and his partner Dan Gephart taking care of estimating and sales. The office was an old bank vault, the warehouse was a garage, the work was small and simple, and estimating and accounting were done with a pad of paper (or napkin) and a pencil. I contrast this with the Gephart of today in our second generation of ownership with multiple office locations, nationwide operations capabilities and large and complex work supported by sophisticated technology and processes. Yes, a lot has changed, but a lot has also remained the same. The foundations for our success and growth since the beginning have been based on family values, loyalty to our employees, great relationships with our customers and business partners and

quality of workmanship. These success factors have not changed and are as important to us today as they were back then. We are very thankful for all of you we have worked with in our first 40 years and are looking forward to the years to come. Happy Holidays!

GEPHART LOW VOLTAGE SYSTEMS MARKET UPDATE

TARGET CENTER – MINNEAPOLIS, MN – Gephart LVS and Electric teamed on this renovation of the home of the Minnesota Timberwolves, a multi-purpose arena with seating for over 20,000 containing over 700 club seats and 68 suites. The low voltage project consisted of broadcast infrastructure, TV distribution & cabling, TV brackets & install, Wi-Fi installation, bowl audio, access control, CCTV, AV sound & equipment, closet builds, backbone fiber, data cabling and coaxial backbone cabling. We also collaborated with Bexel Global (cameras), Daktronics (score & ribbon boards), AmpThink (wireless access points), and Mobilitie (distributed antenna) on systems work.



VIKINGS HEADQUARTERS – EAGAN, MN – Working in conjunction with Gephart Electric, Gephart LVS is building the new, 40-acre Minnesota Vikings Headquarters made up of a new office building, an indoor practice facility, a stadium, four practice fields and a maintenance facility. The low voltage portion of the project consists of broadcast infrastructure, TV brackets & install, AV sound & equipment, closet builds, backbone fiber, data cabling, access control, CCTV and Wi-Fi installation. We are also doing work directly for CenturyLink on this project.

WILD PRACTICE FACILITY – ST. PAUL, MN – Gephart LVS and Gephart Electric are close to wrapping up the old Wabasha Building is the new site of the NHL's Minnesota Wild Training Facility. The Wild will occupy the fifth floor (ice rink) and the basement level including a private parking lot, offices for head coach and staff, a new locker room, a player's lounge and a weight room. Our low voltage scope includes 132 category 6 data cables, 3 new LAN rooms with 2-post racks & backbone fiber optics, access control cabling, CCTV surveillance cabling, and wireless access points cabling.

STINSON LEONARD STREET – MINNEAPOLIS, MN - The construction of this 108,000 SF, four-floor new headquarters has recently come to completion. Beginning in March 2017, we completed full data cabling, fiber & copper backbone, closet build-outs, custom patching head-end and out-end locations and complete design-build sound masking/paging system for one of the largest law firms in the Twin Cities.

OATI – BLOOMINGTON, MN – The new five-story, 110,000 SF building consisted of five floors of tenant office build-out including the main floor data center which included over 3,600 fiber optic terminations, 2,200 category 6 data cables, 7 data closets with 2-post racks & backbone fiber optics, 1 data center with 116 data cabinets & 26 2-post racks, energy management cabling, MaxCell inner duct system, coax cabling, CCTV surveillance cabling, lightning protection, weather stations antennas and paging system.

HUTCHINSON HIGH SCHOOL – HUTCHINSON, MN – This project scope included demolishing of a classroom wing and building in its place a new, three-story classroom wing. Remodeling of the existing core space consisted of a new server room, 1,400 category 6 data cables, 4 data closets with 2-post racks & backbone fiber optics, coax cabling, access control system/cabling, CCTV surveillance system/cabling, intercom equipment/cabling, Wi-Fi antenna cabling, wireless clock system and paging system. Gephart LVS teamed up with Willmar Electric to complete this project.

A highlight of the museum is the 120-seat, one-of-a-kind planetarium that features a 16-meter seamless aluminum dome. Being the first of its kind in the United States, project general foreman Brian West noted it resembled a silo that required 360-degrees of power and lighting. A notable aspect of Gephart's work can be seen in the exterior perimeter of the planetarium that displays color changing lights with programmable custom scenes.

At the center of the museum is the extensive art collection. Many of the smaller dioramas were moved intact. For the larger exhibits, a preservation crew went through the painstaking process of disassembling, preserving, moving, and finally reinstalling them in the new location. Going above and beyond, the Gephart team designed and constructed movable, temporary lighting platforms to assist the artists with their final touches.

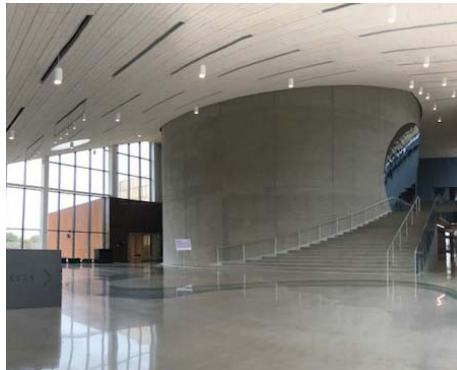
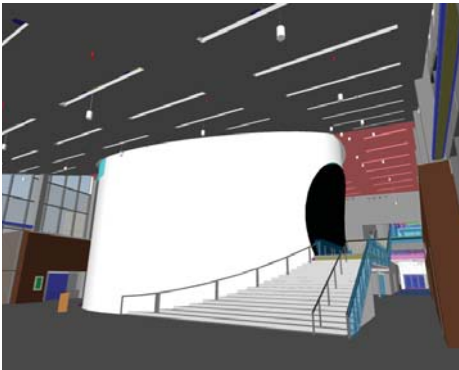
As with many high-profile projects, there were multiple stakeholders with a vested interest in the outcome. Our team worked closely with the construction partners, designers, engineers, curators, and artists to contribute to the overall success of the new museum by being flexible, offering timely solutions, and taking a proactive approach to deliver the project on-time. As the Gephart team wraps up our work at the museum, we are proud of our vital role in the construction of this iconic museum that will continue to preserve Minnesota's history for decades to come.

BIM AT BELL

Gephart's BIM team played an integral part in the construction of the new museum. In addition to locating feeder and branch circuit racks, the team relied heavily on Total Station for the precise placement of:

- Light Fixtures
- Bollard (Post) Site Lighting
- Step Lighting Within Planetarium
- Power Feed for Solar Panels on Roof
- Power Feeds for Individual Display Lighting

The state-of-the-art technology used on this project saved the construction partners significant time and ensured the project would meet the construction deadline.



Left: Model of Bell Museum Lobby Right: Actual of Bell Museum Lobby

SAFETY UPDATE



Satisfying New Silica Standards

On September 23, 2017, OSHA's new silica standards went into effect with the intent to reduce the harmful exposure of silica dust on job sites that can cause serious respiratory illnesses. To comply with the new standards and to keep our workers safe from the dangerous silica dust, Gephart has completed training for over 200 employees on the new policies and procedures, as well as assigning a silica competent person on each job site.

OSHA estimates once the rules are fully realized over 600 lives will be saved and roughly 900 cases of silicosis will be prevented each year.

BELL PROJECT TEAM

OWNER

University of Minnesota

GENERAL CONTRACTOR

McGough Construction

ARCHITECT

Perkins + Will

ENGINEER

Michaud Cooley Erickson

GEPHART TEAM

Mike Murphy
Senior Project Manager

Beau Mannino
Assistant Project Manager

Tom Thordson, Jr.
General Foreman

Brian West
General Foreman

John Dey
BIM Coordinator

GEPHART ELECTRIC AND GUNNAR ELECTRIC AWARDED CPP PARTNERSHIP OF THE YEAR... AGAIN

For the second year in a row, the Association of Women Contractors (AWC) has recognized Gephart Electric and Gunnar Electric as the Construction Partnering Program's (CPP) Partnership of the Year. This award is given annually to the CPP partnership that best exemplifies the program's goals and contributes to its success. Gephart and Gunnar were also part of a team receiving the Large Project of the Year award for our work on the Target Center Renovation project.

Since 2009, Gephart and woman-owned Gunnar have been in a CPP partnership which matches general and specialty contractors with emerging woman- and minority-owned firms to mentor and build the capacity of both the owners and the businesses. The CPP is recognized throughout the Twin Cities by owners, developers and general contractors. Together Gephart and Gunnar have worked on such marque projects as MN Twins Target Field, US Bank Stadium, University of Minnesota's Physics and Nanotechnology Building, and the recent Target Center Renovation.

"Working with Gephart benefits our company on several levels," says Gunnar Electric President Laura Karow. "From learning new business practices to participating in joint business development activities, our partnership has made a difference for our company."

From Gephart's perspective, we gain a trusted contracting partner. According to Scot Moser, Gephart's Director of Business Development, "It's great to know you're going into a project with someone you know will do the job right and shares your company's values. Trust is a key component of success for any construction project and we have definitely forged that with Gunnar over the last several years."



From Left to Right: Doug Nystrom, Gunnar Electric; Lois Walters, Gunnar Electric; Barb Lau, AWC; Larry Heinsch, Gephart Electric; Scot Moser, Gephart Electric



SHERRI HAVENS
OFFICE MANAGER
ROBINSONVILLE, MS OFFICE

EMPLOYEE SPOTLIGHT

What is your role at Gephart?

I am the Office Manager of the Robinsonville, MS office. My role is to do whatever needs to be done.

What has changed since you started at Gephart?

We've grown! Instead of focusing on what's changed I'm more impressed with what hasn't.

What is the best work advice you have ever been given?

I'm fortunate that I've always worked with the best of the best. There's been a lot of advice and some great role models, but the best advice has always come from my Mom. She started early teaching work ethic. If you're going to do something, do it right and take pride in a job well done.

What do you do in your free time?

My free time consists of reading books, painting furniture, riding four-wheelers, kayaking and watching my daughter play soccer.

What place would you most want to visit?

I have four places left on my someday list: Alaska, Stonehenge in England, the Statue of Liberty in New York City and Mount Rushmore in South Dakota.

Who is your idol and why?

My Mom. Single mother of 3 who had nothing and managed to provide for and raise successful children by working hard and sacrificing.

Do you have any hidden talents?

I'm pretty good with a bow..